

# MOUNTAIN CREEK BALLROOM COMPLEX

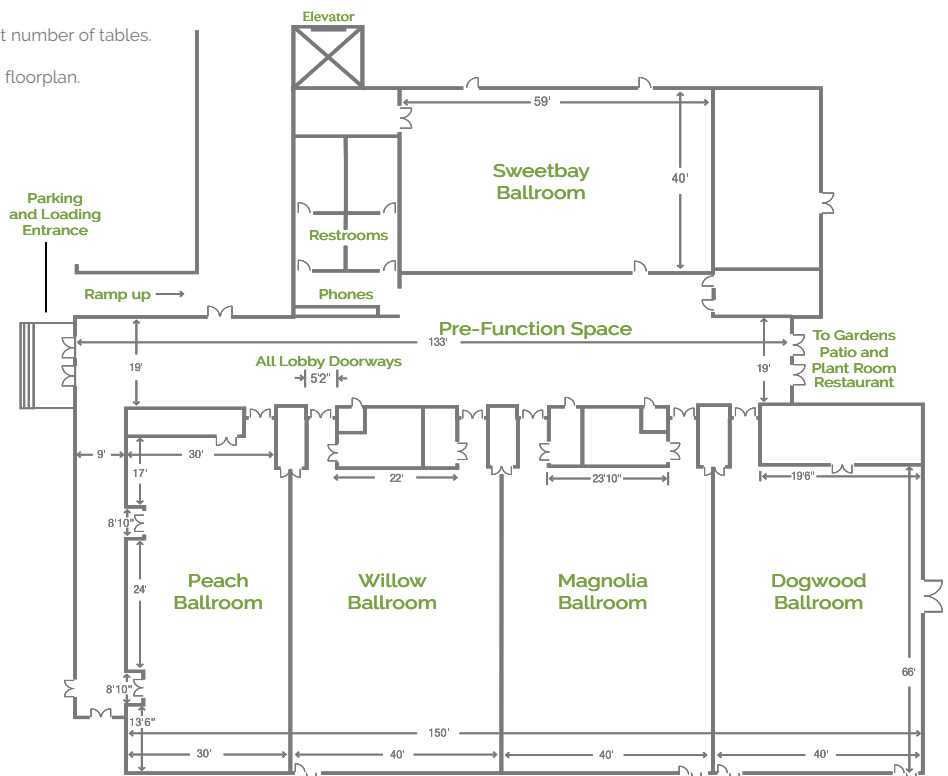
The Mountain Creek Ballroom Complex offers the best of all worlds for your group. Over 17,000 square feet of flexible event space makes it a great choice for conventions, meetings, exhibits, receptions, and banquets. The conveniently located guest rooms at The Mountain Creek Inn offer rustic, tasteful, and affordable lodging options, and guests enjoy free WiFi access, an outdoor pool, the Spirit of '52 restaurant, and a fitness center, plus free admission to the Gardens throughout their stay. Callaway's luxurious and secluded Villas are also a close option for large groups.

Room	Square Feet	Dimensions	Ceiling Height	Banquet	Classroom	Conference Table	Hollow Square	Reception	Theater	U-shape
Combined Ballroom*	10,050	66' x 150'	13'2"	750	700	-	-	1,500	1,200	-
Peach	2,160	30' x 72'	13'2"	120	100	52	56	150	160	52
Willow	2,640	40' x 66'	13'2"	224	175	52	72	300	300	60
Magnolia	2,640	40' x 66'	13'2"	224	175	40	72	300	300	60
Dogwood	2,880	40' x 66'	13'2"	224	175	40	72	300	300	60
Sweetbay	2,360	40' x 59'	9'	160	160	44	60	250	200	50
Pre-Function Space	2,527	19' x 133'	-	-	-	-	-	265	-	-
Gardens Patio/ Courtyard	3,500	35' x 100'	-	100	-	-	-	150	-	-
<b>Adjacent Meeting Rooms**</b>										
Elm Boardroom	672	24' x 28'	8'	-	-	12	-	-	-	-

Other than measurements, numbers in chart reflect number of people, not number of tables.  
 \*The Ballroom can accommodate up to 80 8'x10' exhibit booths.  
 \*\*Adjacent Meeting Rooms are within walking distance, but not pictured in floorplan.

## MOUNTAIN CREEK BALLROOM COMPLEX AT A GLANCE

- 17,000 square feet of flexible space
- 10,000-square-foot ballroom with the option to subdivide into four breakout rooms
- The Pre-Function Space and Sweetbay rooms can be used individually or combined for nearly 5,000 square feet of meeting and exhibit space
- An outdoor garden patio and courtyard available for meals and receptions for up to 100
- Complimentary WiFi
- Convenient, tasteful, and affordable lodging options



# THE COTTAGE MEETING CENTER

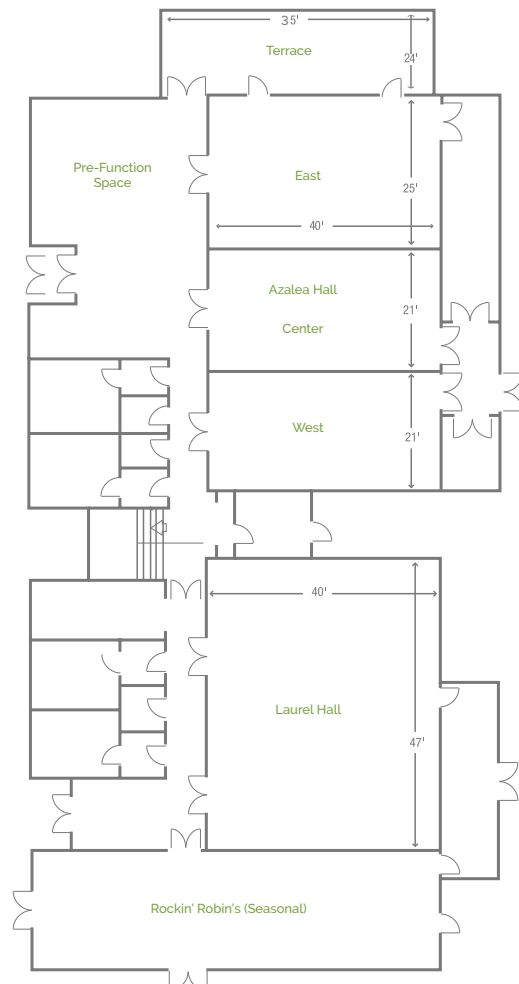
Nestled in a quiet woodland setting, the Cottage Meeting Center makes for a memorable gathering experience in a naturally beautiful location. Featuring both the Laurel and Azalea Halls, it can accommodate up to 500 conference attendees in total, with a spacious reception area for pre-function events and a scenic terrace for breaks, meals, or other events. The Cottage Meeting Center is situated amongst Callaway Resort & Gardens' Southern Pine Cottages near Robin Lake Beach, offering your guests a relaxing, authentic escape in Georgia's great outdoors, plus free admission to the Gardens throughout their stay.

Room	Square Feet	Dimensions	Ceiling Height	Banquet	Classroom	Conference Table	Hollow Square	Reception	Theater	U-shape
Azalea Hall	2,740	40' x 68'	9'6"	144	175	-	72	150	300	60
Azalea East	1,020	25' x 40'	9'6"	48	40	28	32	60	45	28
Azalea Center	860	21' x 40'	9'6"	48	40	28	32	45	60	28
Azalea West	860	21' x 40'	9'6"	40	40	40	-	40	45	20
Azalea East & Center	1,880	40' x 47'	9'6"	90	80	-	48	90	130	36
Azalea West & Center	1,720	40' x 43'	9'6"	80	80	-	48	136	90	-
Laurel Hall	1,880	40' x 47'	10'5"	120	120	32	48	150	200	40
Terrace	840	24' x 35'	-	-	-	-	-	-	-	-

Other than measurements, numbers in chart reflect number of people, not number of tables.

## THE COTTAGE MEETING CENTER AT A GLANCE

- 17,000 square feet of flexible space
- 10,000 square-foot ballroom with the option to subdivide into four breakout rooms
- The Gallery and Sweetbay rooms can be used individually or combined for nearly 5,000 square feet of meeting space.
- An outdoor garden patio and courtyard available for meals and receptions for up to 100.
- Booth-controlled lighting and projection
- Complimentary WiFi
- Convenient, tasteful, and affordable lodging options



# THE LODGE & SPA CONFERENCE CENTER

The Lodge and Spa Conference Center tastefully blends the necessities for successful events with spectacular natural surroundings. The center comprises 27,000 square feet of inspiring space, including two ballrooms, multiple breakout rooms, boardrooms, an executive conference room, pre-function areas, and a restaurant and lounge. Our conference services team is on hand to assist with your event from start to finish, and an on-site business center, complimentary WiFi, and advanced audio/visual service ensure your event will run smoothly and efficiently.

The conference center is located within the Lodge and Spa, which features chic, renovated guest accommodations with stunning woodland, garden, and lake views, beautifully landscaped terraces, a world-class spa, and a resort swimming pool. Guests at the Lodge and Spa enjoy free admission to the Gardens throughout their stay, hiking and biking trails, and access to Robin Lake Beach.

Room	Square Feet	Dimensions	Ceiling Height	Banquet	Classroom	Conference Table	Reception	Theater	U-shape
Longleaf Ballroom	7,000	60' x 116'	16' - 18'	600	500	-	1,000	850	-
Longleaf Ballroom A	1,170	30' x 39'	16' - 18'	80	75	-	175	130	-
Longleaf Ballroom B	1,170	30' x 39'	16' - 18'	80	75	-	175	160	-
Longleaf Ballroom AB	2,340	60' x 39'	16' - 18'	160	150	-	350	275	-
Longleaf Ballroom CD	2,280	60' x 38'	16' - 18'	170	160	-	350	275	-
Longleaf Ballroom E	2,340	60' x 39'	16' - 18'	160	150	-	250	255	-
Longleaf Ballroom ABC	3,480	60' x 58'	16' - 18'	250	235	-	525	420	-
Longleaf Ballroom DE	3,480	60' x 58'	16' - 18'	250	235	-	525	420	-
Loblolly Ballroom	4,080	48' x 83'	14' - 16'	300	270	-	600	480	-
Loblolly Ballroom A	1,344	48' x 28'	14' - 16'	100	90	-	200	160	-
Loblolly Ballroom BC	1,344	48' x 28'	14' - 16'	100	90	-	200	160	-
Loblolly Ballroom D	1,344	48' x 28'	14' - 16'	100	90	-	200	160	-
Loblolly Ballroom AB	1,968	48' x 41'	14' - 16'	140	125	-	300	225	-
Loblolly Ballroom CD	1,968	48' x 41'	14' - 16'	140	125	-	300	225	-
Cypress Conference Room	1,519	49' x 31'	11'	110	100	-	200	180	40
Cypress Conference Room A	744	24' X 31'	11'	55	50	-	100	90	20
Cypress Conference Room B	744	24' X 31'	11'	55	50	-	100	90	20
Sourwood Breakout Room 2	450	20' x 24'	8'9"	30	24	20	60	50	10
Sourwood Breakout Room 3	450	20' x 24'	8'9"	30	24	20	60	50	10
Sourwood Breakout Rooms 2-3	900	40' x 24'	8'9"	60	48	40	120	100	20
Sourwood Breakout Room 4	450	20' x 24'	8'9"	30	24	40	60	50	10
Sourwood Breakout Room 5	450	20' x 24'	8'9"	30	24	20	60	150	0
Sourwood Breakout Rooms 4-5	900	40' x 24'	8'9"	60	48	40	120	100	20
Sourwood Boardroom	450	20' x 24'	8'9"	-	-	20	-	-	-
Bayberry Breakout Room 1	450	20' x 24'	8'9"	30	24	20	60	50	10
Bayberry Breakout Room 2	450	20' x 24'	8'9"	30	24	20	60	50	10
Bayberry Breakout Rooms 1-2	900	40' x 24'	8'9"	60	48	40	120	100	20
Bayberry Breakout Room 3	450	20' x 24'	8'9"	30	24	20	60	50	10
Bayberry Breakout Room 4	450	20' x 24'	8'9"	30	24	20	60	50	10
Bayberry Breakout Rooms 3-4	900	40' x 24'	8'9"	60	48	40	120	100	20

Other than measurements, numbers in chart reflect number of people, not number of tables.

↑  
NORTH

# The Lodge and Spa




## THE LODGE AND SPA CONFERENCE CENTER AT A GLANCE

- Over 27,000 square feet of meeting space
- 2 ballrooms, up to 9 breakout rooms, and separate conference and boardrooms for a variety of meetings and events
- Ample pre-function reception space, both indoors and outdoors
- On-site conference service staff and audio/visual staff
- Complimentary WiFi
- Spectacular natural vistas
- 150 convenient and tasteful Lodge and Spa accommodations, including Presidential Suite
- LEED certified for an eco-friendly use of resources



PRE-FUNCTION SPACE	Square Feet	Reception
Longleaf Ballroom - Pre-Function	2,600	350
Longleaf Ballroom (West) - Pre-Function	400	50
Loblolly Ballroom - Pre-Function	1,450	150
Breakout Rooms - Pre-Function	390	40

EXTERIOR SPACE	Square Feet	Reception
Ironwood Lounge Courtyard	1,550	200
Break-out Terraces	1,660	2 x 125
Longleaf Ballroom Terrace/Lawn	5,000	700
Longleaf Ballroom Side Lawn	2,000	300

ADDITIONAL SPACE	Square Feet	Banquet	Classroom	Reception	Theater
Beach Dome	21,000	1,500	1,400	3,000	2,500
Trade Show 8x10	131 exhibits				
Trade Show 10x10	105 exhibits				