

## MEETINGS ON LITTLE ST. SIMONS ISLAND, GEORGIA



P.O. BOX 21078  
ST. SIMONS ISLAND, GEORGIA 31522 USA

(888) 733-5774 ~ (912) 638-7472

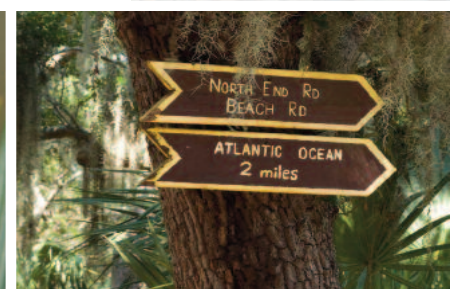
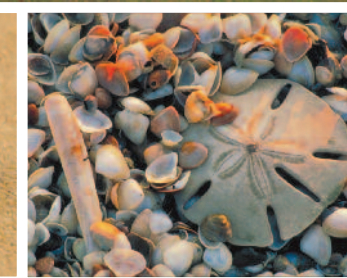
[WWW.LITTLESSI.COM](http://WWW.LITTLESSI.COM)



## A UNIQUELY NATURAL PLACE TO GATHER



PRINTED ON RECYCLED PAPER



## LITTLE ST. SIMONS ISLAND

*Resting along Georgia's coast and safeguarded by generations of family ownership, Little St. Simons Island is a natural sanctuary among the last of its kind anywhere.*

*Here, the passing years have been an ally and tides are the only intrusion. It is a place where all that nature has created over thousands of years has been preserved by those who have been devoted to its care for the last one hundred.*

*Reached only by boat, Little St. Simons Island's 10,000 acres, seven miles of deserted beaches, dense maritime forests, vast saltmarshes and countless winged and wild creatures welcome your group to come gather and share in its discoveries.*





## A PLACE WHERE ATTENDEES CONNECT WITH EACH OTHER AND WITH THE NATURAL WORLD.

*Small wonder that Little St. Simons Island is an inspiring destination for business group gatherings. After all, this remarkable sanctuary has beckoned generations of visitors to the discoveries of its wilderness and beaches.*

*The natural beauty and privacy of Little St. Simons Island infuse a very real sense of focus, purpose and productivity for executive retreats of a dozen to corporate groups of up to 32 persons.*

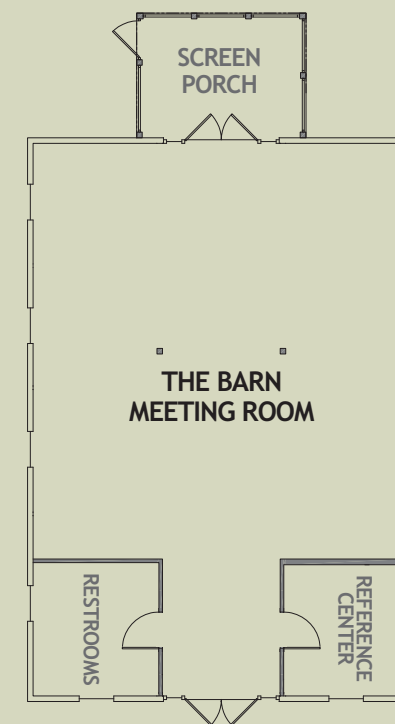


## THE BARN

*Little St. Simons Island welcomes groups for either productive day-long sessions or longer overnight retreats.*

*The center point for group meetings on Little St. Simons Island is the historic Barn. This landmark within the Island's main Lodge compound has been extensively renovated and transformed to host small group gatherings. Its open, flexible floorplan accommodates a variety of meeting configurations and is also ideal for social receptions.*

*The Barn is joined by a number of complementing settings for meetings, including our poolside Screen House, the Hunting Lodge and limitless outdoor venues.*





## MEETING PLANNER'S CHECKLIST

### TRANSPORTATION

- Private boat service to/from St. Simons Island to Little St. Simons Island (15 min.)

### ACCOMMODATIONS

- 16 Guest Rooms (for up to 32 guests)
- All accommodations offer:
  - Full Air-Conditioning
  - Coffeemaker
  - Hair Dryer
  - Bathrobes
  - Access to fireplace, screen porch or deck, washer/dryer, iron/ironing board

### MEALS

- Three full meals daily included in rates
- Naturalist-hosted cocktail hour and hors d'oeuvres each evening before dinner

### BEVERAGES

- All beverages are included in rates

### ISLAND ACTIVITIES

- Rates include use of all Island activities including:
  - Guided adventures with Naturalists
  - 7 miles of beach (umbrellas, chairs and sports items provided)
  - Bicycles
  - Birding
  - Creek and Surf Fishing (all bait and tackle provided)
  - Trail Hiking
  - Use of motorized skiffs
  - Organic Garden Walks
  - Swimming Pool
  - Kayaking/Canoeing
  - Horseshoes, Bocce, Board Games

### ISLAND FACILITIES

- Gift Shop (apparel, books, merchandise)
- Island Museum
- Wireless Internet Access/Cell Phone Service

### MEETING SERVICES

- Site Inspections and Tours
- Customized, Pre-Event Planning and Coordination by Island Conference Staff
- Multiple Meeting Venues
- Flexible Meeting Configurations
- Audio/Visual Services
- Group Meal Planning
- Break and Refreshments Menus
- Social Events
- Customized Group Activities

### ALL-INCLUSIVE RATES

Rates for day meetings include boat transportation and all Island activities. Rates for overnight group meetings include: boat transportation, guest accommodations, three meals, all beverages and all Island activities. Tax and service charge are additional.

## SAMPLE AGENDAS

### TWO-NIGHT ISLAND RETREAT

**DAY ONE**  
4:30 pm: Arrival to Island  
6:30 pm: Oyster Roast & Cocktails  
7:30 pm: Dinner in Hunting Lodge  
9:00 pm: Owl Prowl with Naturalist

**DAY TWO**  
9:00 am: Breakfast  
10:00 am: Meeting Session  
1:00 pm: Lunch  
2:30 pm: Team Building Activity  
6:30 pm: Cocktail Reception  
7:30 pm: Dinner in Hunting Lodge

**DAY THREE**  
9:00 am: Breakfast  
10:00 am: Wrap-Up Meeting  
12:00 pm: Departure

### SINGLE DAY MEETING

10:30 am: Arrival to Island  
10:30 am: Morning Meeting Session  
1:00 pm: Lunch  
2:30 pm: Afternoon Meeting Session or North End Adventure  
4:00 pm: Departure



## GROUP ADVENTURES

*Attendees often remark that our guided excursions are among the most memorable facets of their group's visit to Little St. Simons Island.*

*These adventures, led by our team of enthusiastic and gifted naturalists, help attendees relax between work sessions while fostering colleague relationships and encouraging team-building.*

*Shaped around your group's agenda, outings are relaxed opportunities to discover the Island's ecology, wildlife and natural history. Options include birding trips, exploration of the Island's north or south ends, beachcombing, seasonal turtle walks, kayaking, fishing, bike adventures, garden walks and evening owl prowls.*





## SENSATIONAL CUISINE

*Regional cuisine by our skilled chefs, complemented by produce from the Island's USDA-certified organic garden, make the three daily meals (included in overnight rates) a highlight of group experiences.*

*Breakfast and dinner are served family-style in the Hunting Lodge dining room, with dinner prefaced by a cocktail reception. Depending on group preferences, lunch can be enjoyed in the Lodge, in The Barn or other meeting venues, or presented open-air at the beach. Beverages and snacks for meeting breaks, evening oyster roasts and picnic lunches are all easily arranged. The Island's kitchen staff is happy to accommodate special dietary needs.*

[ THREE MEALS A DAY AND ALL BEVERAGES ARE INCLUDED IN OVERNIGHT GROUP RATES ]



## GROUP ACCOMMODATIONS

*Guest accommodations on Little St. Simons Island are situated in six distinctive settings, either beneath the canopy of live oaks in the main Lodge compound or along the edge of the river and marsh just a short stroll away.*

*All guest accommodations are wonderfully comfortable, fully air-conditioned, are non-smoking, have ceiling fans, coffee makers and provide access to fireplaces, refrigerators, porches and washer/dryer facilities.*

[ ALL-INCLUSIVE RATES ARE PER ROOM, PER NIGHT.

FOR GUEST ROOM FLOORPLANS, VISIT [LITTLESI.COM](http://LITTLESI.COM) ]



## HUNTING LODGE

*Built in 1917, the historic Hunting Lodge is the heart of Island life and the location for meals and gatherings. Within the Lodge are two guest rooms with private baths, accommodating two guests each.*



## RIVER LODGE CEDAR HOUSE

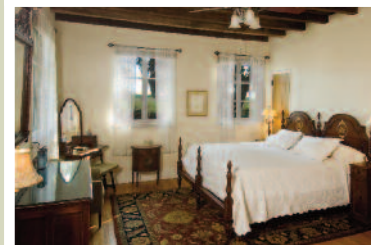
*These two handsome structures rise at the river's edge, just a short stroll from the main Lodge compound. Both offer four spacious bedrooms for two guests, each with private bath, that open onto a shared great room with fireplace and a large screen porch.*

*All rooms in the River Lodge and Cedar House have access to large, wrap-around decks with beautiful marsh and river vistas. Both are ideal settings for gatherings of up to eight guests each.*



## HELEN HOUSE

*Located in the Island's riverfront compound and built in 1928, this historic tabby house reflects the coast's architectural history. Its three bedrooms and two baths enjoy access to a large central living room with fireplace, screen porch and courtyard.*



## MICHAEL COTTAGE

*At the edge of the forest near the main Lodge compound, this secluded, classic 1930s bungalow features two bedrooms, two baths, living room with fireplace, front and rear screen porches and outdoor shower.*

## TOM HOUSE

*This quaint cottage in the main Lodge compound offers a living room with fireplace, one bedroom, one bath, outdoor shower and large, screen rear porch.*



## HERE, PRODUCTIVITY AND FOCUS COME NATURALLY.

*We warmly invite your group to come gather and experience the rare rewards of this quiet nature retreat. Since we limit the number of overnight guests, we encourage you to make your inquiries early so that your group's preferences can be fully accommodated. To check availabilities or to arrange a site visit, please contact us at 888.733.5774. Or visit [LittleSSI.com](http://LittleSSI.com).*



## LOCATION AND TRANSPORTATION



*Little St. Simons Island is located on the Georgia coast midway between Savannah, GA and Jacksonville, FL. Daily commercial air service is available to those two cities as well as to nearby Brunswick, GA. If arriving by air, we can assist with rental car and van service information.*

*Our private boat departs from Hampton River Marina on the north end of St. Simons Island. By car, St. Simons Island is reached from I-95 via Georgia Exits 29, 36 or 38.*

*Please advise us of your travel plans so that we may best accommodate your schedule and needs.*

[ FOR ADDITIONAL TRAVEL INFORMATION AND DRIVING DIRECTIONS, VISIT [LITTLESSI.COM](http://LITTLESSI.COM) ]